

Anti-IL-18 Reference Antibody (GSK 1070806)
Recombinant Antibody
Catalog # APR10256**Specification**

Anti-IL-18 Reference Antibody (GSK 1070806) - Product Information

Application	FC, Kinetics, Animal Model
Primary Accession	Q14116
Reactivity	Human
Clonality	Monoclonal
Isotype	IgG1
Calculated MW	147.38 KDa

Anti-IL-18 Reference Antibody (GSK 1070806) - Additional Information**Target/Specificity**

IL-18

Endotoxin

< 0.001EU/ µg,determined by LAL method.

Conjugation

Unconjugated

Expression system

CHO Cell

Format

Purified monoclonal antibody supplied in PBS, pH6.0, without preservative. This antibody is purified through a protein A column.

Anti-IL-18 Reference Antibody (GSK 1070806) - Protein Information**Name** IL18 ([HGNC:5986](#))**Synonyms** IGIF, IL1F4**Function**

Pro-inflammatory cytokine primarily involved in epithelial barrier repair, polarized T-helper 1 (Th1) cell and natural killer (NK) cell immune responses (PubMed:10653850). Upon binding to IL18R1 and IL18RAP, forms a signaling ternary complex which activates NF-kappa-B, triggering synthesis of inflammatory mediators (PubMed:14528293, PubMed:25500532, PubMed:37993714). Synergizes with IL12/interleukin-12 to induce IFNG synthesis from T-helper 1 (Th1) cells and natural killer (NK) cells (PubMed:<a href="http://www.uniprot.org/citations/10653850"

target="_blank">10653850). Involved in transduction of inflammation downstream of pyroptosis: its mature form is specifically released in the extracellular milieu by passing through the gasdermin-D (GSDMD) pore (PubMed:33883744).

Cellular Location

Cytoplasm, cytosol. Secreted. Note=The precursor is cytosolic (PubMed:33883744). In response to inflammasome-activating signals, cleaved and secreted (PubMed:33883744, PubMed:37993712, PubMed:37993714). Mature form is secreted and released in the extracellular milieu by passing through the gasdermin-D (GSDMD) pore (PubMed:33883744, PubMed:37993714). In contrast, the precursor form is not released, due to the presence of an acidic region that is proteolytically removed by CASP1, CASP4 or CASP5 during maturation (PubMed:33883744, PubMed:37993714). The secretion is dependent on protein unfolding and facilitated by the cargo receptor TMED10 (PubMed:32272059).

Tissue Location

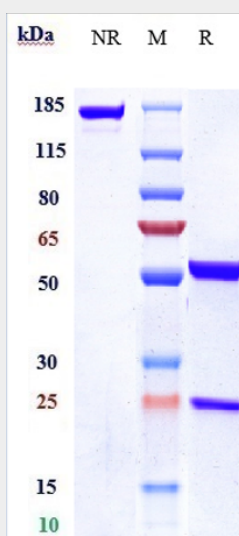
[Isoform 2]: Expressed in ovarian carcinoma but undetectable in normal ovarian epithelial cells. Resistant to proteolytic activation by caspase-1 and -4

Anti-IL-18 Reference Antibody (GSK 1070806) - Protocols

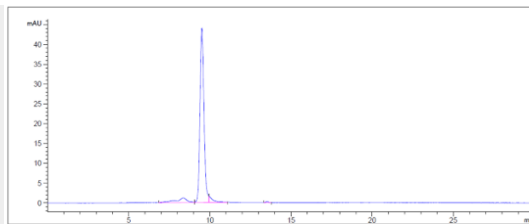
Provided below are standard protocols that you may find useful for product applications.

- [Western Blot](#)
- [Blocking Peptides](#)
- [Dot Blot](#)
- [Immunohistochemistry](#)
- [Immunofluorescence](#)
- [Immunoprecipitation](#)
- [Flow Cytometry](#)
- [Cell Culture](#)

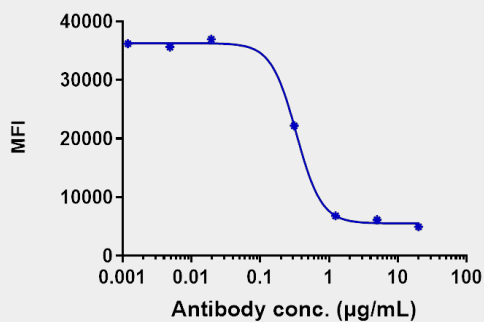
Anti-IL-18 Reference Antibody (GSK 1070806) - Images



Anti-IL-18 Reference Antibody (GSK 1070806) on SDS-PAGE under reducing (R) condition. The gel was stained with Coomassie Blue. The purity of the protein is greater than 95%



The purity of Anti-IL-18 Reference Antibody (GSK 1070806) is more than 95% ,determined by SEC-HPLC.



Anti-IL-18 Reference Antibody (GSK 1070806)-induced FACS Blocking activity was evaluated using Hu IL-18R α -Hu IL-18R β -HEK293-A8. The IC₅₀ was approximately 0.335 µg/mL.